



香港大學  
THE UNIVERSITY OF HONG KONG

# POKFIELD CAMPUS

A WORLDCLASS  
EDUCATION | CULTURE | SPORTS  
COMPLEX



## BUILDING THE FUTURE WITH VISION

**A CAMPUS WHERE  
ACADEMIC ASPIRATION  
AND INNOVATION  
CAN TAKE FLIGHT**

While the University of Hong Kong is celebrating over a century of history, it is also boldly forging a path towards the future.

The Pokfield Campus is a key facet of the University's pioneering development plans, and will be a multipurpose hub designed for the cultivation of talent, the pursuit of knowledge and new discoveries, body-and-mind development, and global interdisciplinary collaboration.

# DESIGNED TO INSPIRE

The design of the Pokfield Campus embraces innovation and sustainability, and supports mental and physical well-being. It is guided by eight major design aspirations, which are integrated into the overall concept and create a forward-looking, smart and sustainable campus.



## 1 THE FUTURE IS NOW

To create an iconic campus hub that will serve the needs of HKUers today and for generations to come

## 2 VIRTUAL + REALITY

To create learning spaces that combine the physical and virtual worlds to enable students to learn and interact anytime and anywhere

## 3 ACTIVE + AMBIENT SPACES

To integrate practical campus facilities with relaxing, engaging spaces - such as terraces, patios, gardens and walkway - to create a cohesive, interactive campus

## 4 LEADING AS EXAMPLE

To incorporate state-of-the-art selections of digital infrastructure to provide a top-notch environment conducive to learning, interaction and innovation

## 5 LASTING IMPRESSIONS

To imbue the architecture with a welcoming ambience and lasting visual appeal

## 6 HKU'S VISION

To provide a world-class intellectual environment that enables HKU to reach new heights

## 7 FIT FOR SMART CITY

To incorporate concepts of Smart Mobility, Smart Environment, Smart Campus and Smart Facility Management

## 8 SUSTAINABILITY

To strive to achieve UNESCO Sustainable Development Goals and "zero carbon emission" target



Please go to:

<https://pokfield.hku.hk/design/planning-principles/design-philosophy-inspiration>



# A GLIMPSE OF PHASE 1 OF POKFIELD CAMPUS

The Pokfield Campus aims to create a multifaceted community for study, work, living, sports and recreation. Phase 1 comprises two buildings, namely an academic complex which will house HKU's Business School, as well as a multi-purpose sports complex which will provide world-class sports and recreation facilities. Let's look at these two major components of the Pokfield Campus that will first come into service in 2025.

## EXCELLENCE AND INNOVATION THE ACADEMIC COMPLEX OF THE HKU BUSINESS SCHOOL

The iconic Academic Complex will serve as the new home for the HKU Business School. It is designed to support the School's strategic development goal of becoming a premier business school in Asia with global influence and a record of nurturing future leaders.

Located at the junction of Pokfulam Road and Pokfield Road, the new Academic Complex will cover a net floor area of more than 19,000 square metres spreading across nine storeys, including five levels stepping downward abutting the slanting Pokfield Road from Pokfulam Road as the Ground Level. The Complex will offer ample research and communal space that facilitates collaboration and outreach. The new campus aims to create an enriching intellectual environment that supports academic and research excellence.



### WORLD-CLASS ACADEMIC FACILITIES

It will house auditoriums, lecture theatres, multi-purpose classrooms, research centers, etc. All these facilities will be equipped with state-of-the-art technologies and innovative features, such as classrooms with integrated hybrid learning technologies. The new complex will deliver a dynamic and cohesive experience for both in-room and remote students, with an advanced digital infrastructure that facilitates leading-edge research and encourage cross-disciplinary collaborations.

### ENGAGING COMMUNAL SPACES

Equal importance is attached to the design of communal spaces. The atrium and the rooftop landscaped garden will allow top scholars, business leaders and students to interact, socialise and relax. The Academic Complex will also be linked to a sunken garden right outside, where outdoor activities of different types can be held.

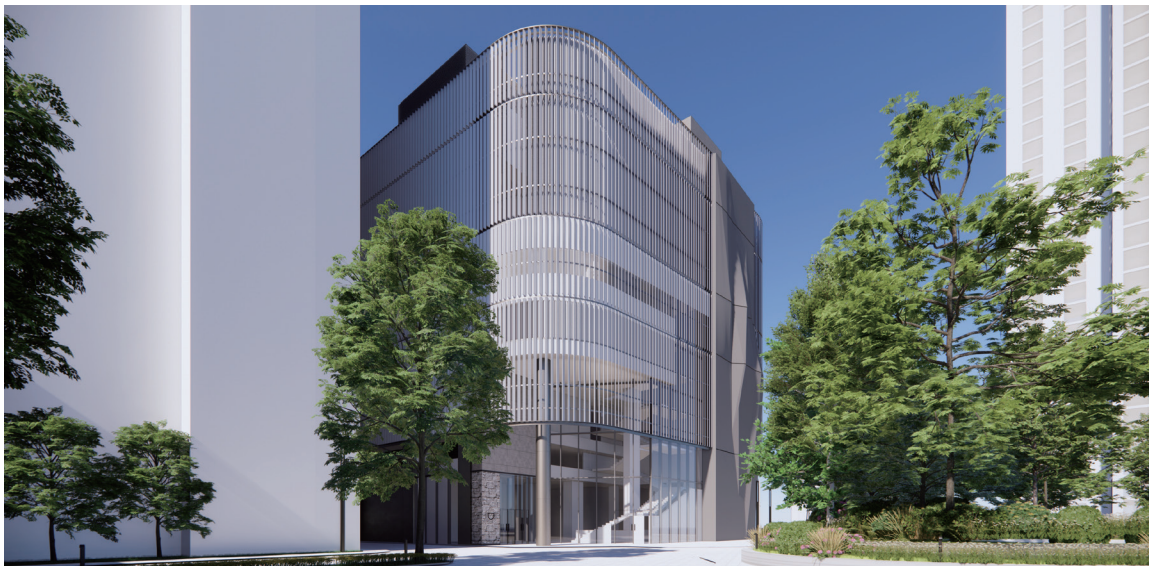
### ICONIC ARCHITECTURE

Students, staff and visitors arriving at the north entrance of the Pokfield Campus will be greeted by the eye-catching, iconic exterior of the Business School, which resembles a butterfly or the infinity sign when seen from the sky. The exterior design symbolises the metamorphosis of students into leaders of the future and HKU's dedication to research and collaboration that is endlessly innovative.



## MULTI-PURPOSE SPORTS COMPLEX

The Multi-purpose Sports Complex will receive a major face-lift, providing worldclass sports facilities where students and staff can actively engage in the pursuit of wellness - physical health and mental wellbeing. Located at the south-western tip of the Pokfield Campus and covering a net floor area of over 5,000 square metres, the ultra-modern four-storey Sports Complex for both indoor and outdoor sports. These new facilities will provide students, staff and members of the HKU community with a welcoming environment to participate in sports and active recreation, develop lifelong sports skills and foster a healthy lifestyle.



### INDOOR SWIMMING POOL

The indoor swimming pool, measuring 35 metres by 25 metres with a range of depths to serve different purposes, will be HKU's first heated pool. The pool will be available for swimmers' use all year round.

### INDOOR MULTI-PURPOSE SPORTS HALL

The centrepiece of the new sports complex will be the indoor sports hall, covering a floor space of nearly 1,700 square metres and allowing a wide range of sports training and competitions to take place, such as badminton, basketball, volleyball and handball. It will be equipped with retractable seating to cater to various events.



### HEALTH AND FITNESS CENTRE

With a total floor area of 500 square metres, the health and fitness centre will be furnished with various cardio and strength training equipment.

### MULTI-PURPOSE ACTIVITY ROOMS

A total of 2 multi-purpose activity rooms that may be further broken down into smaller rooms will be available for different types of sports, such as rowing, fencing, karate, judo, Chinese martial art, dancing and yoga etc.

### ROOFTOP BASKETBALL COURT

An outdoor basketball court with a running track will be situated on the rooftop of the Sports Complex.



# COMMUNITY ENGAGEMENT

The Pokfield Campus Development presents an opportunity to uplift the community's environment and well-being. HKU is dedicated to creating a new campus at Pokfield Road that improves the accessibility between MTR Kennedy Town Station and Pokfulam Road, enabling people living and working in the district to travel uphill and downhill with greater ease.

After the meetings in September 2021 with local residents who shared their ideas on how connectivity in areas surrounding the Pokfield Campus could be improved, HKU further engaged the community by launching a community survey and a community workshop in April 2022.



## COMMUNITY SURVEY

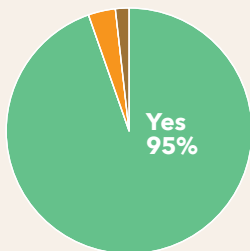
From 8 to 24 April 2022, HKU conducted an online survey to ascertain the views of community members as well as HKU members on the current pedestrian connectivity surrounding the Pokfield Campus and the different pedestrian link proposals. A total of 178 responses were received. The survey has found that the majority of the respondents support leveraging the development as a pedestrian gateway between Kennedy Town and the Pokfulam area.

## COMMUNITY WORKSHOP

HKU also appointed an architectural and planning consultant to carry out a community workshop on 30 April 2022, in which participants further discussed their aspirations for HKU's proposed Community Gateway as well as other pedestrian link proposals made by the community. Participants in general supported the provision of elevators and footbridges to create a pedestrian-friendly environment to help residents to overcome the level difference between Kennedy Town and Pokfulam Road.

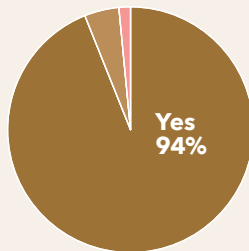
### Improvements needed for pedestrian connectivity and walkability?

General Public



■ Yes ■ No  
■ Don't know

HKU Members



■ Yes ■ No  
■ Don't know



# STAKEHOLDERS' VIEWS ON PEDESTRIAN CONNECTIVITY

## Current Pedestrian Connectivity

Agree that improvements are needed for pedestrian connectivity between MTR Kennedy Town Station, Pokfield Road and Pokfulam Road

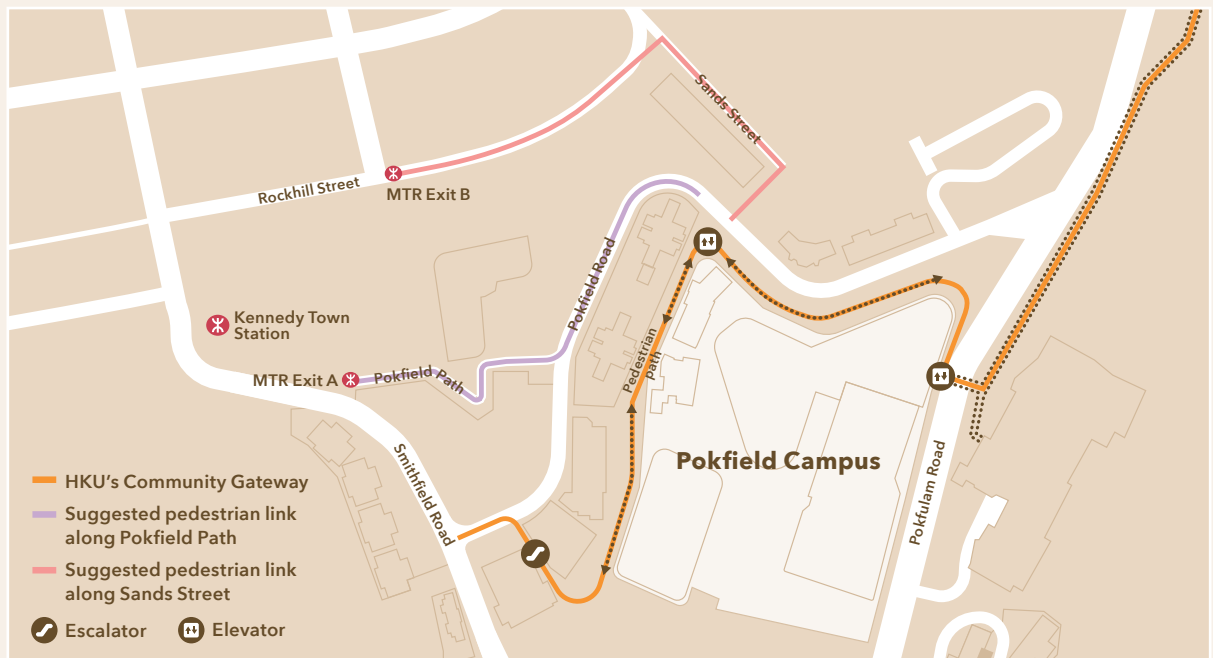
Reasons discourage people from walking

## HKU's Community Gateway

Most important benefits

Increase likeliness to walk

	Agree that improvements are needed for pedestrian connectivity between MTR Kennedy Town Station, Pokfield Road and Pokfulam Road	Reasons discourage people from walking	Most important benefits	Increase likeliness to walk
General Public	95%	<ul style="list-style-type: none"> <li>Steep slope (46%)</li> <li>Narrow footpaths (26%)</li> <li>Long distance (24%)</li> </ul>	<ul style="list-style-type: none"> <li>Easier access to MTR Kennedy Town Station (22%)</li> <li>Reduced physical climbing (20%)</li> <li>Easier access to Pokfulam Road (19%)</li> </ul>	84%
HKU Members	94%	<ul style="list-style-type: none"> <li>Steep slope (40%)</li> <li>Narrow footpaths (26%)</li> <li>Long distance (26%)</li> </ul>	<ul style="list-style-type: none"> <li>Better connectivity between MTR Kennedy Town Station &amp; Pokfield Campus (25%)</li> <li>Reduced physical climbing (19%)</li> <li>Better connectivity between Pokfield &amp; Centennial Campuses (19%)</li> </ul>	57%



## Community's Suggested Pedestrian Link along Pokfield Path

Increase walkability & connectivity

Increase likeliness to walk

## Community's Suggested Pedestrian Link along Sands Street

Increase walkability & connectivity

Increase likeliness to walk

	Increase walkability & connectivity	Increase likeliness to walk	Increase walkability & connectivity	Increase likeliness to walk
General Public	80%	77%	71%	74%
HKU Members	88%	61%	65%	50%

A report of stakeholders' views collected via the survey and workshop has been compiled and shared with relevant government departments for consideration in improving pedestrian connectivity in the district. HKU will consider the feasibility of the feedback and incorporate in the design of the Pokfield Campus where appropriate.

For detailed community survey results, please visit:

[https://pokfield.hku.hk/content/uploads/2022/06/Community-Survey\\_Summary-of-Findings.pdf](https://pokfield.hku.hk/content/uploads/2022/06/Community-Survey_Summary-of-Findings.pdf)



# PROGRESS UPDATE

## STATUTORY TOWN PLANNING PROCEDURES

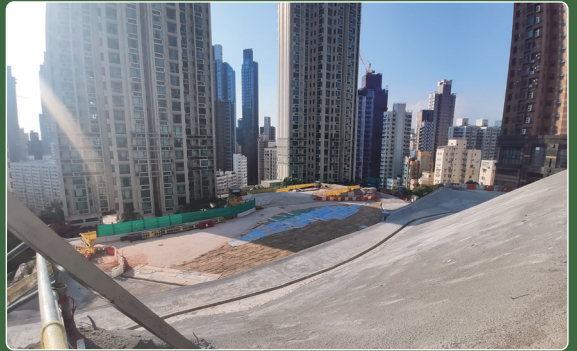
The statutory town planning procedures relating to the Pokfield Campus Development have been completed and received approval from the Town Planning Board in May 2022.

## CONSTRUCTION WORKS

The demolition of Pokfield Road Residences, where Phase 2 of the Development will be situated, has been completed. Other works are in progress, including site formation, excavation, concreting and underground utilities diversion.



► Demolition of Pokfield Road Residences and site formation works



► Water main diversion on the slope facing Our Lady of the Rosary Church and near HKU Jockey Club Student Village II

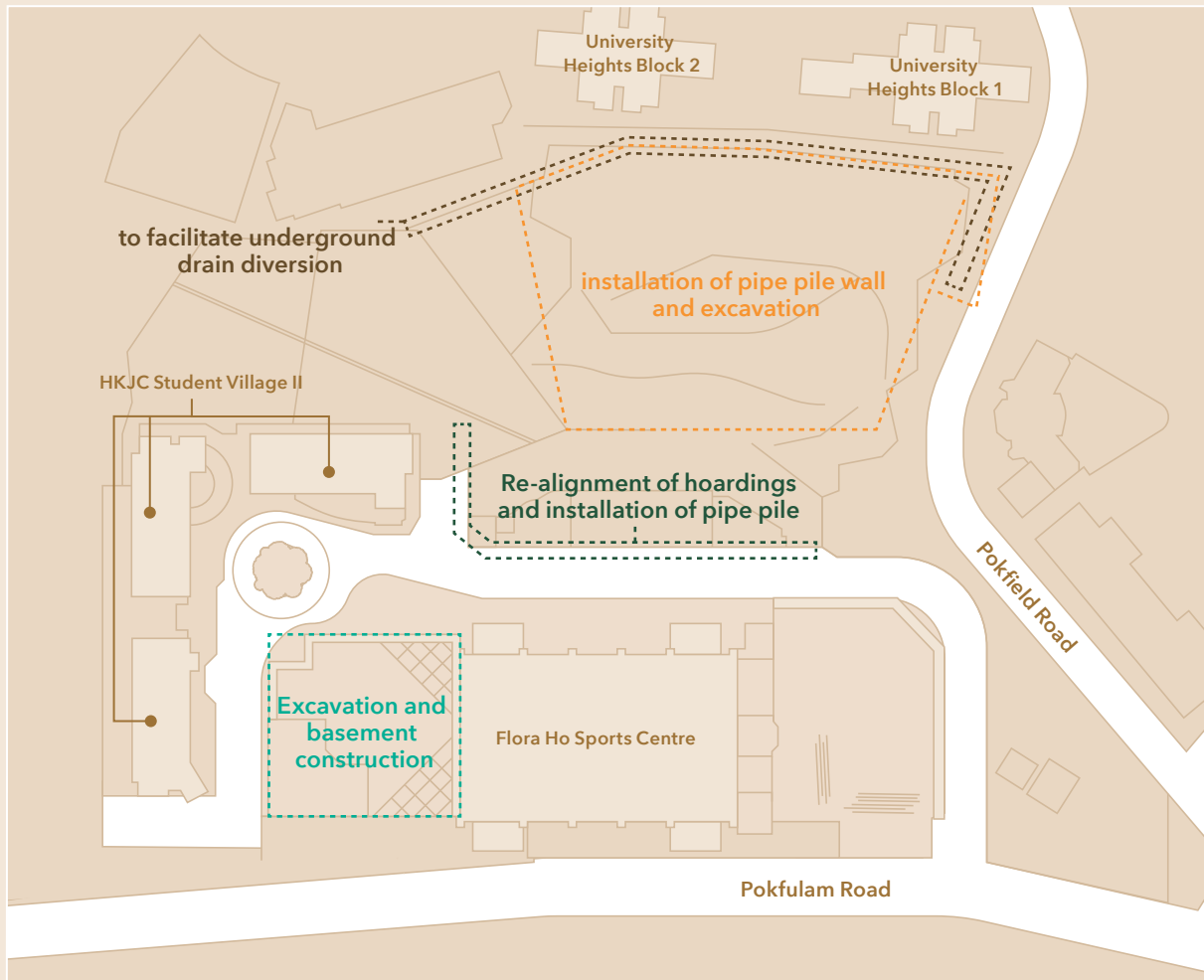


► Excavation works at the location of the former tennis court adjacent to the Flora Ho Sports Centre for drum ramp construction



# UPCOMING WORKS AND ARRANGEMENTS

The following works are scheduled to be carried out on the Pokfield Campus site in Q3 2022 to Q4 2022:



## YOUR VIEWS MATTER

HKU strives to create a better environment for the benefit of the community. We welcome your views and will continue to closely communicate with stakeholders of different sectors about the Pokfield Campus Development.

For more details and subscription to e-News:

**POKFIELD.HKU.HK**

Enquiry:

**PCOMPLEX@HKU.HK**

October 2022  
Printed on PEFC-certified paper