



Pokfield Campus

A Better Community for All

Background

To accelerate its growth into the future and beyond, the University of Hong Kong (HKU) has embarked on the Pokfield Campus Development (Development) that will transform HKU's existing facilities at the Pokfield site into an iconic campus hub combining academic, conference, sports and residential facilities.

Given the lack of space for further expansion on the Main Campus and Centennial Campus, there is a need for HKU to build a new campus with a world-class intellectual environment to support its long-term development. The redevelopment of the facilities at the Pokfield site, which have been put into service for more than 50 years, will offer an opportunity to enhance the standards of campus facilities, optimise the use of land resources and connect the site with the Main Campus and Centennial Campus.

The Pokfield Campus Development is expected to:

- Provide more teaching and research space to foster academic exchange and nurture the next generations of talent for Hong Kong
- Upgrade HKU's decades-old sports and recreational facilities to meet the standards of the 21st century
- Enhance the community as a whole in terms of visual quality, better public facilities and improved connectivity with the neighbouring areas

Development Overview

The Existing Pokfield Site

The existing sports and recreational facilities and staff quarters at the Pokfield site have been put into service for more than 50 years and became dilapidated. Flora Ho Sports Centre, Lindsay Ride Sports Centre, Stanley Smith Swimming Pool and Pokfield Road Residences on the site will be redeveloped into a new campus hub.



Elevator

Pokfield Road

Vehicle access point

2

1A

Pedestrian footpath

3

Vehicle access point


1B

Jockey Club Student Village II

Proposed community gateway

Smithfield Road

Pokfulam Road



Total site area

About 25,000m²

No. of new buildings

5

Total GFA for redevelopment

About 146,200m²

Non-domestic: about 126,200m²

Domestic: about 20,000m²

Building height

Ranging from

102mPD to 155mPD

The Pokfield Campus Development, consisting of a new academic complex of the HKU Business School, a multi-purpose sports complex, residence for staff and visiting scholars, an academic complex and a conference centre, will be carried out in 3 phases:

Phase 1

1A Academic Complex of HKU Business School

(not more than 102mPD)

Auditoriums

Lecture theatres

Multi-purpose classrooms

Research lab

Common area/breakout rooms

Administrative offices

1B Multi-purpose Sports Complex

(not more than 102mPD)

Indoor swimming pool

Indoor multi-purpose sports hall

Gym room

Dance room

Multi-purpose activity rooms

Phase 2

2 Residence for Staff and Visiting Scholars

(not more than 150mPD)

2 residential towers

Amenities for occupants

Phase 3

3 Academic Complex and Conference Centre

(not more than 155mPD)

Lecture theatres

Seminar rooms

Flat multi-function rooms

Classrooms

Tutorial rooms

Learning common

Library

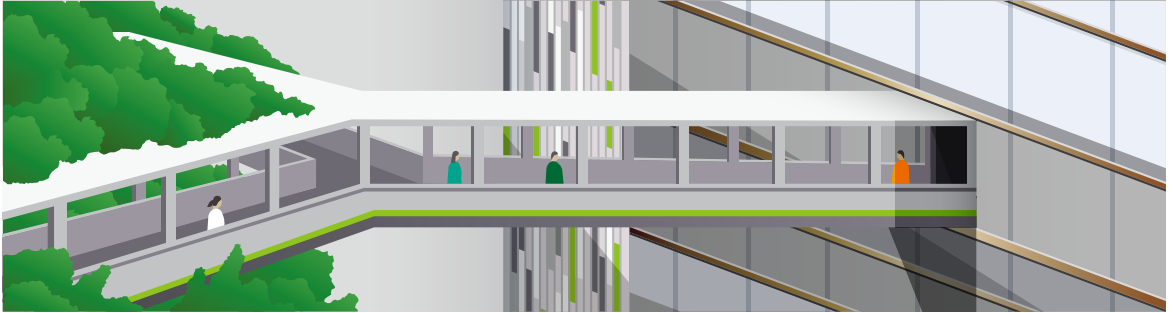
Administrative offices

Community Benefits

As part of the Pokfulam community, HKU has taken into consideration the needs of the community in the Development by carefully planning the provision of facilities that will serve to improve the community's environment, offer convenience to residents, and enhance the ambience of the community:

Better pedestrian connectivity

- A footbridge connecting the Pokfield Campus with the HKU Centennial Campus and hiking trails nearby is proposed to be built to improve pedestrians' walking experience and safety as opposed to the existing narrow footpaths along Pokfulam Road.



- HKU will work with the District Council, the Government and local stakeholders to study the possibility of building a community gateway to connect the Pokfield Campus with Smithfield Road, allowing pedestrians to walk to and from Kennedy Town with ease and convenience.
- Barrier-free access and facilities will be provided for people with impaired mobility on the Pokfield Campus.

Enhanced environment

- The iconic buildings and landscaping features on the Pokfield Campus will not only enhance the streetscape of the neighbourhood but also inject vitality into the district.
- Various landscaping arrangements, such as green roofs, vertical greening, and periphery landscape treatments will be adopted to achieve multi-level greening and enhance the environment.
- HKU will take the opportunity to improve some of the existing slopes on the site and in the vicinity.



More open spaces

- The Pokfield Campus will provide high-quality green open spaces, including a sunken garden at the junction of Pokfulam Road and Pokfield Road, for the enjoyment of members of the public.

Provision of campus facilities

- HKU will actively explore the possibility of offering parking spaces and certain campus facilities for public use.

Caring for Our Community

Detailed technical studies have been carried out by professional consultants to assess the visual, air ventilation, air quality, traffic, noise, drainage and sewerage impact of the Development. The studies have found the impact to be minimal or insignificant.

To minimise the Development's impact on the neighbourhood and respond to stakeholders' concerns, HKU will adopt the following building designs and construction practices, and exercise stringent supervision of contractors:

Building designs

- The 5 new buildings will adopt a diverse height profile for better air ventilation, with the tallest building not exceeding 155mPD, which is lower than most of the existing residential buildings surrounding the Pokfield site.
- There will be sufficient building separation from the surrounding buildings to allow visual and air permeability.
- A stepped profile will be adopted for the Phase 3 building, with the height of the northern portion descending towards the southern portion, to reduce the building bulk and create green terraces.
- The orientation of the 2 blocks of staff quarters of Phase 2 will be designed in such a way to reduce direct facing of other residential units nearby.
- Greening and landscaping will be implemented to enhance visual quality.
- Vehicular access points will be set up on Pokfulam Road and Pokfield Road for passengers' drop-off and pick-up inside the campus area to avoid adding burden to road traffic.



Construction practices

- Eco-friendly construction methods, such as prefabricated construction and non-percussive piling, will be adopted.
- On-site mitigation measures, such as noise barriers, hand-held demolition tools and scaffolding wrapping, will be used to control construction noise and dust.
- Arrangements will be made to avoid noisy works in early hours.
- A covered walkway will be provided outside the Pokfield site to ensure pedestrians' safety.



All images shown are artist's impressions only.

